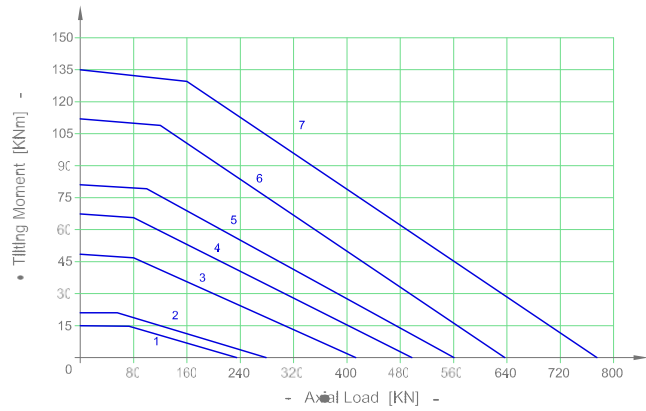
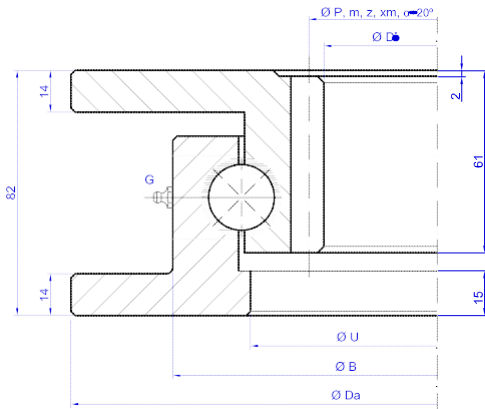


## Internal gear

### I.22.A

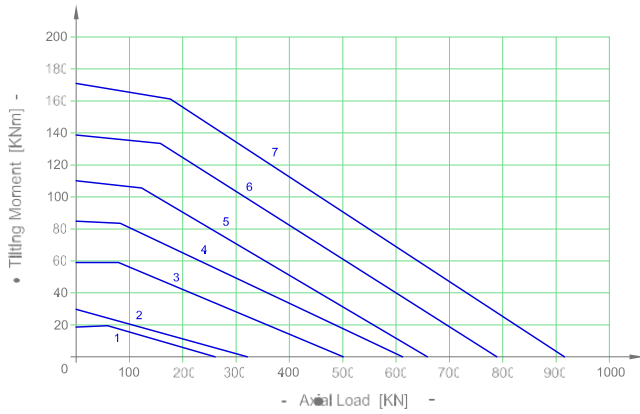
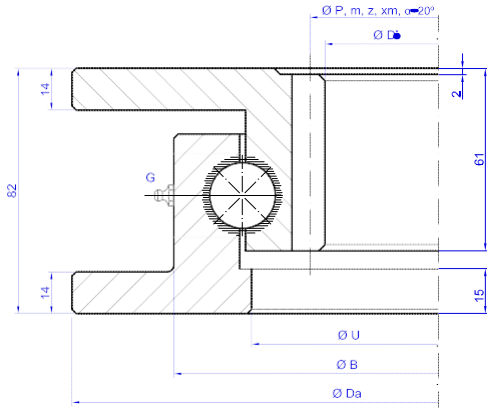


Bearing Type	Dimensions				Gear teeth			Tooth Force		Mass
	Da mm	B mm	U mm	Di mm	P mm	m	z n°	Fz nor KN	Fz max KN	Weight KG
1 I.400.22.00.A	395	330	280	232	240	4	60	7,4	14,8	28
2 I.500.22.00.A	499	431	379	330	340	5	68	24,2	33,9	38
3 I.700.22.00.A	699	631	579	530	540	5	108	24,2	33,9	59
4 I.800.22.00.A	805	739	687	636	648	6	108	26,7	37,5	68
5 I.880.22.00.A	879	811	759	708	720	6	120	26,7	37,5	75
6 I.1000.22.00.A	999	931	879	828	840	6	140	26,7	37,5	88
7 I.1100.22.00.A	1095	1034	975	924	936	6	156	26,7	37,5	99

G = N°2 x Grease nipples DIN 71412 AM 6x1 equally-spaced

Ask for a detailed drawing of the bearing, values may differ.

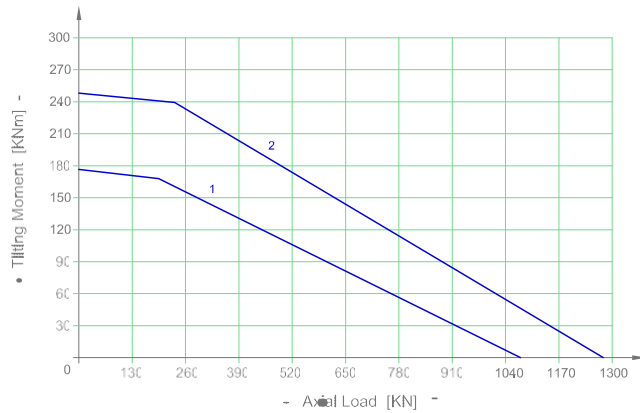
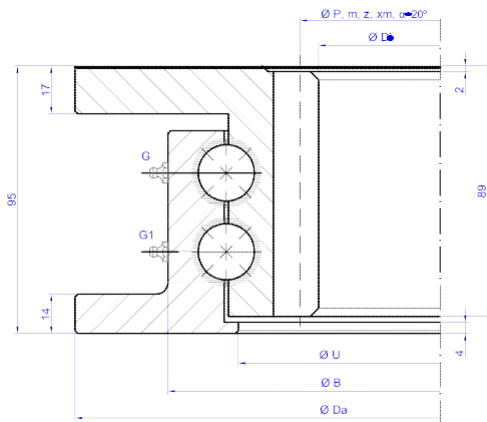
I.22.A.T



Bearing Type	Dimensions				Gear teeth			Tooth Force		Mass
	Da mm	B mm	U mm	Di mm	P mm	m	z n°	Fz nor KN	Fz max KN	Weight KG
1 I.400.22.00.A-T	395	330	280	232	240	4	60	7,4	14,8	28
2 I.500.22.00.A-T	499	431	379	330	340	5	68	24,2	33,9	38
3 I.700.22.00.A-T	699	631	579	530	540	5	108	24,2	33,9	59
4 I.800.22.00.A-T	805	739	687	636	648	6	108	26,7	37,5	68
5 I.880.22.00.A-T	879	811	759	708	720	6	120	26,7	37,5	75
6 I.1000.22.00.A-T	999	931	879	828	840	6	140	26,7	37,5	88
7 I.1100.22.00.A-T	1095	1034	975	924	936	6	156	26,7	37,5	99

G = N°2 x Grease nipples DIN 71412 AM 6x1 equally-spaced      Ask for a detailed drawing of the bearing, values may differ.

I.2.20.A



Bearing Type	Dimensions				Gear teeth				Tooth Force		Mass
	Da mm	B mm	U mm	Di mm	P mm	m	z n°	xm mm	Fz nor KN	Fz max KN	Weight KG
1 I.880.2.20.00.A	880	814	764	707	720	6	120	+0,5	42,5	59,5	28
2 I.1000.2.20.00.A	1000	934	884	831	840	6	140	-1	42,5	59,5	38

G = N°2 x Grease nipples DIN 71412 AM 6x1 equally-spaced      Ask for a detailed drawing of the bearing, values may differ.