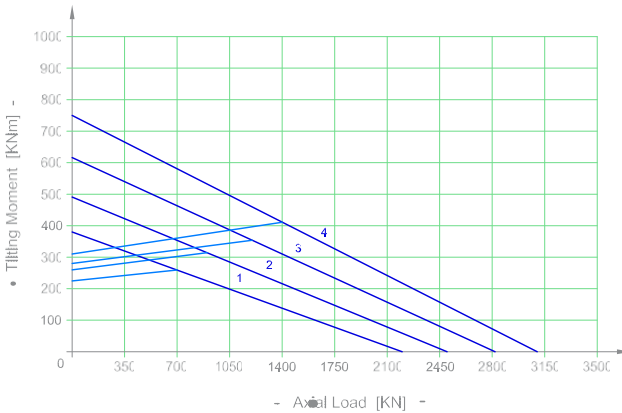
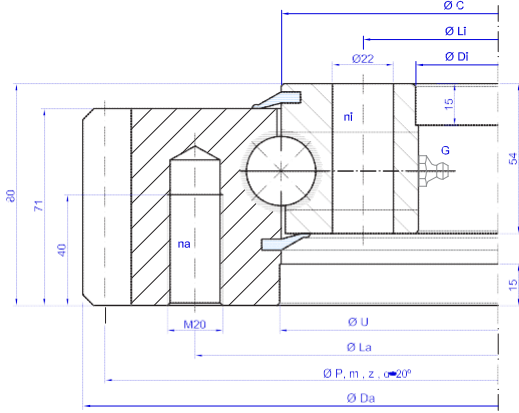


E.25.B

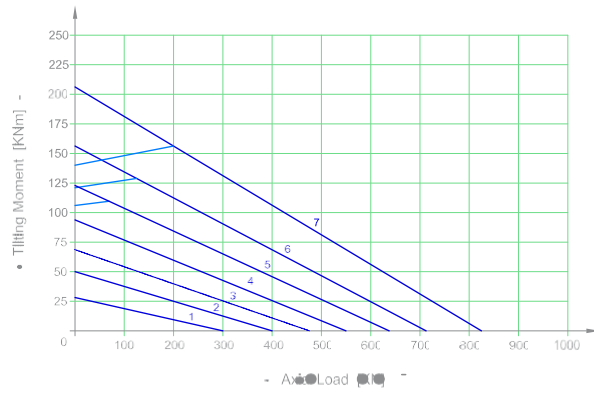
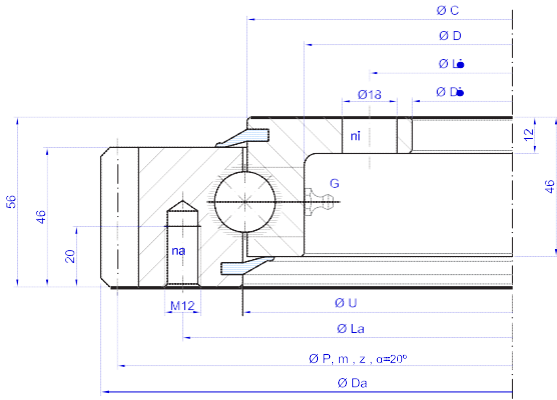


Bearing Type	Dimensions				Fixing holes			Gear teeth			Tooth Force		Mass	
	Da mm	U +HT8 mm	C mm	Di +HT8 mm	La mm	na n°	Li mm	ni n°	P mm	m	z n°	Fz nor KN	Fz max KN	Weight KG
1 E.900.25.00.B	898	755	754	657	816	24	695	24	882	9	98	50,8	71,1	128
2 E.1000.25.00.B	997	855	854	757	916	28	795	28	981	9	109	50,8	71,1	145
3 E.1100.25.00.B	1096	955	954	857	1016	30	895	30	1080	9	120	50,8	71,1	155
4 E.1200.25.00.B	1198	1055	1054	957	1116	30	995	30	1180	10	118	55,5	77,6	171

G = N°4 x Grease nipples DIN 71412 AM 8x1 equally-spaced

Ask for a detailed drawing of the bearing, values may differ.

E.20.C



Bearing Type	Dimensions					Fixing holes			Gear teeth			Tooth Force		Mass	
	Da mm	U mm	C mm	D mm	Di mm	La mm	na n°	Li mm	ni n°	P mm	m	z n°	Fz nor KN	Fz max KN	Weight KG
1 E.505.20.00.C	504	415,5	412,5	375	304	455	10	332	12	495	5	99	17,8	24,9	30
2 E.650.20.00.C	640,8	545,5	542,5	505	434	585	14	462	14	630	6	105	21,2	29,7	41
3 E.750.20.00.C	742,8	645,5	642,5	605	534	685	16	562	16	732	6	122	21,2	29,7	49
4 E.850.20.00.C	838,8	745,5	742,5	705	634	785	18	662	16	828	6	138	21,2	29,7	55
5 E.950.20.00.C	950,4	845,5	842,5	805	734	885	18	762	18	936	8	117	28,3	39,6	66
6 E.1050.20.00.C	1046,4	945,5	942,5	905	834	985	20	862	20	1032	8	129	28,3	39,6	71
7 E.1200.20.00.C	1198,4	1095,5	1092,5	1055	984	1135	22	1012	20	1184	8	148	28,3	39,6	83

G = N°4 x Grease nipples DIN 71412 AM 8x1 equally-spaced

Ask for a detailed drawing of the bearing, values may differ.