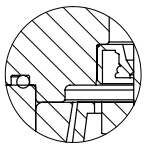
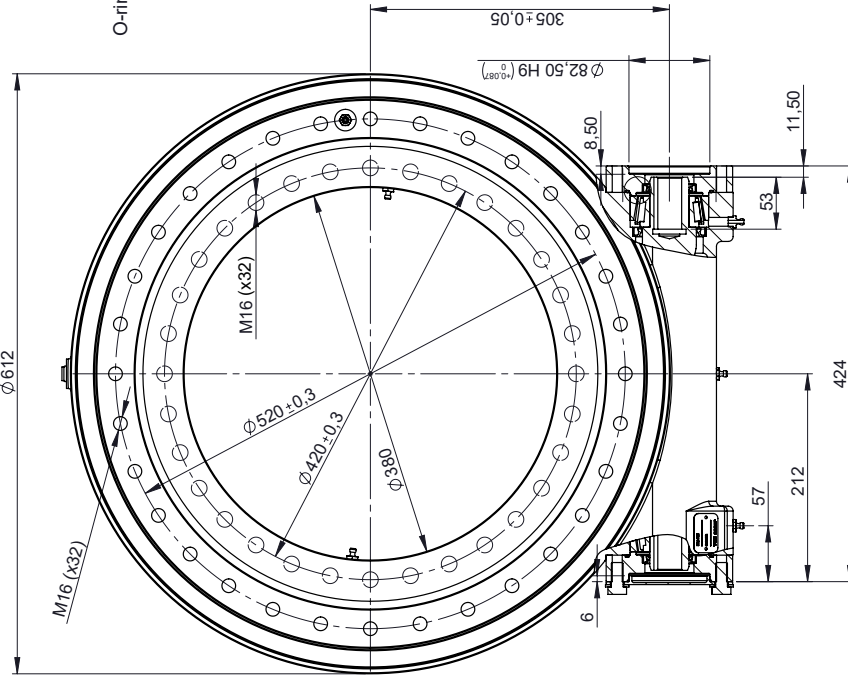
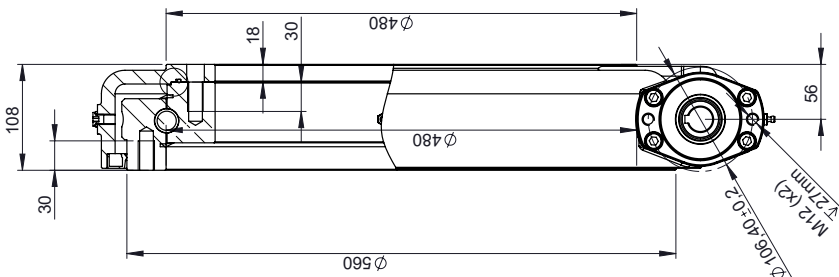
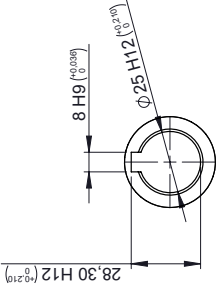


BE SERIES

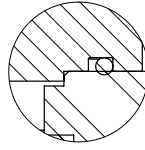
METRIC



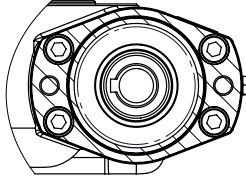
O-ring and Lip Seal Detail
Scale 1:1



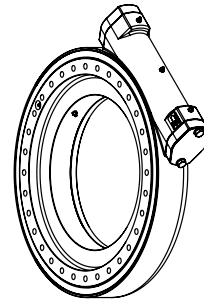
Input Shaft Detail
Scale 1:2



O-ring Detail (Housing)
Scale 1:1



Output shaft detail
Scale 1:3
(Same configuration as Input shaft)



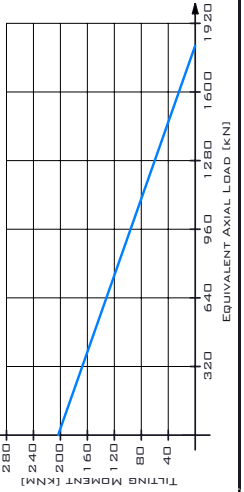
MINIMUM INPUT TORQUE: 25NM

MAIN PERFORMANCE PARAMETERS

GEAR RATIO	92:1	HOLDING TORQUE	*35.5kNm
EFFICIENCY	40%	TILTING MOMENT	203.4kNm
SELF-LOCKING GEAR	YES	RADIAL STATIC LOAD	675kN
BACKLASH CLEARANCE	<0.17°	AXIAL STATIC LOAD	1.808kN
MAXIMUM TORQUE	30.000Nm	RADIAL DYNAMIC LOAD	251kN
NOMINAL TORQUE	25.000Nm	AXIAL DYNAMIC LOAD	293kN

NOTES: ALL BLEW DRIVE ARE PRE-LUBRICATED. MAXIMUM OUTPUT SPEED 1RPM.
STANDARD PAINT: FOR CORROSION CATEGORY C3-M - COLOR RAL 9005

LIMITING LOAD DIAGRAM



SHAFT: $\phi 25$ MM KEYS SHAFT
FLANGE: SAE - 2BOLT FLANGE

The information contained in this document is the property of TGBgroup. It is not to be reproduced, stored in a retrieval system, or used in any form or by any means, without the prior written permission of TGBgroup. TGBgroup reserves the right to change the information without previous notice and without liability.

>1200	±1.2
>400.0 - 1200	+0.8
>120.0 - 400.0	+0.5
>30.0 - 120.0	+0.3
>6.0 - 30.0	+0.2
>3.0 - 6.0	+0.1
>0.3 - 3.0	+0.1
Range of sizes	Unfinished
	tolerance



Reference	BE600-Z1	Rev	D
Denomination	Sales Drawing	NUM. PIECES	1
MATERIAL	-	WEIGHT [kg]	109.55
SCALE	1:5	SIZE	A3
		SHEET	1 of 1