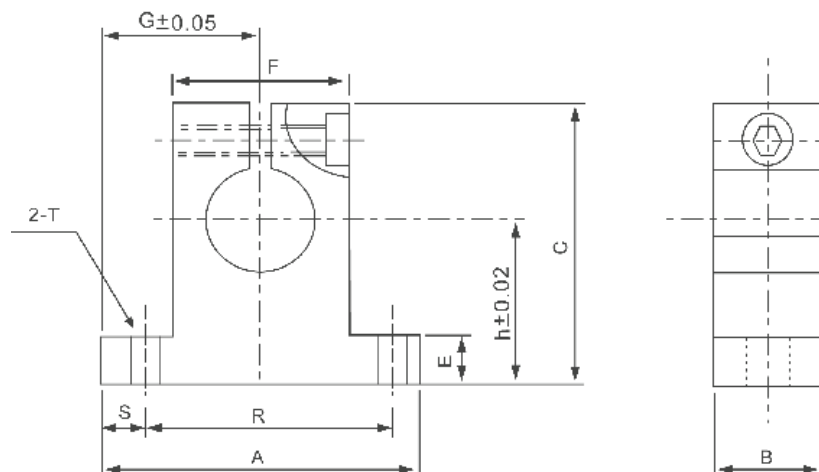


SK



Z legovaného hliníku

Patkové uchycení

Typ	Průměr tyče	h	G	A	B	C	E	F	R	S	T	Hmotnost (g)
	(mm)	(mm)	(mm)	(mm)	(mm)	(mm)	(mm)	(mm)	(mm)	(mm)	(mm)	
SK 8	8	20	21	42	14	32,8	6	18	32	5,0	5,5	24
SK 10	10	20	21	42	14	32,8	6	18	32	5,0	5,5	24
SK 12	12	23	21	42	14	37,5	6	20	32	5,0	5,5	30
SK 13	13	23	21	42	14	37,5	6	20	32	5,0	5,5	30
SK 16	16	27	24	48	16	44,0	8	25	38	5,0	5,5	40
SK 20	20	31	30	60	20	51,0	10	30	45	7,5	6,6	70
SK 25	25	35	35	70	24	60,0	12	38	56	7,0	6,6	130
SK 30	30	42	42	84	28	70,0	12	44	64	10,0	9,0	180
SK 35	35	50	49	98	32	82,0	15	50	74	12,0	11,0	270
SK 40	40	60	57	114	36	96,0	15	60	90	12,0	11,0	420
SK 50	50	70	63	126	40	120,0	18	74	100	13,0	14,0	750

