

**Screw driven guided linear unit**

Linearantrieb mit Rundspindel und integrierter Kugelumlaufführung  
Unità a vite e guida a ricircolo di sfere

TECHNICAL DATA   TECHNISCHE DATEN   DATI TECNICI					
Size - Baugröße - Taglia					225x75
Max. speed* - Max. Geschwindigkeit* - Velocità max*	m/s				1,5*
Max. stroke length - Max. Hub - Corsa max	mm	1000	1250	1500	
Min. stroke length - Min. Hub - Corsa min	mm	100	100	100	
Pitch - Spindelsteigung - Passo vite	mm	5	10	206	
Screw diameter - Spindeldurchmesser - Diametro vite	mm		20		
Base weight - Gewicht bei 0mm Hub - Peso corsa 0 mm	Kg		10,4		
Add for 100 mm of stroke - Gewicht bei 100mm Hub - Peso corsa 100 mm	Kg		1,6		
Max. load** - Max. Belastung ** - Carico max**	Fx	N	11000	11200	10500
	Fy	N		9200	
	Fz	N		9200	
Moments* - Max. Belastungsmoment* - Momenti max*	Mx	Nm		670	
	My	Nm		560	
	Mz	Nm		670	
Inertia moment Aluminum profile - Flächenträgheitsmoment - Momento d'inerzia profilo	Ix	cm <sup>4</sup>		2208	
Inertia moment Aluminum profile - Flächenträgheitsmoment - Momento d'inerzia profilo	Iy	cm <sup>4</sup>		2322,6	
Repeatability - Wiederholgenauigkeit - Ripetibilità	mm			± 0,02	
Screw class - klasse Kugelgewinde - Classe vite**					T7
No load torque - Leerlaufmoment - Coppia resistente	Nm	0,3	0,25	0,2	

\* It depends from stroke and the spindle pitch  
 \* In Abhängigkeit von Hub und Spindelsteigung  
 \* Valore indicativo, dipende dalla corsa e dal passo vite

\*\* Max values for dynamic conditions. Please refer to the following formula when combined loads are applied.  
 \*\* Für die Ermittlung der maximalen dynamischen Tragzahlen bei kombinierten Kraftangriffspunkten, nutzen Sie bitte die nebenstehende Berechnungsformel.  
 \*\* Valori massimi in condizioni dinamiche. In presenza di carichi combinati riferirsi alla formula per la verifica dei carichi massimi da applicare.

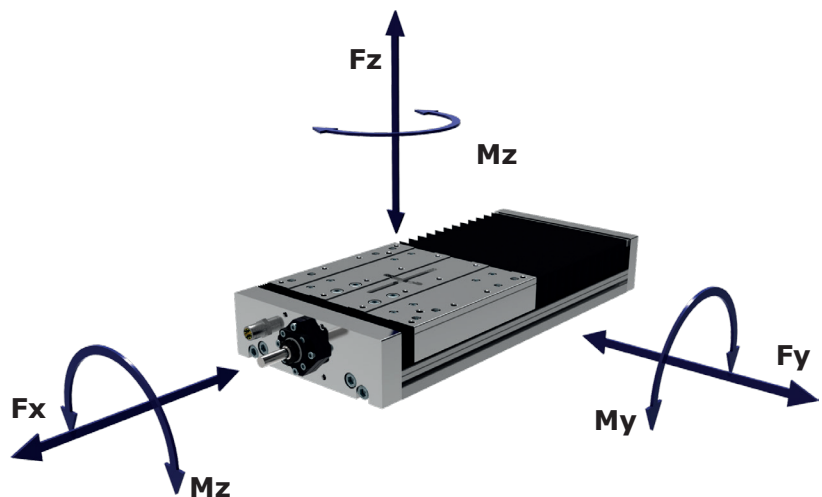
$$\frac{F_{yA}}{F_y} + \frac{F_{zA}}{F_z} + \frac{M_{xA}}{M_x} + \frac{M_{yA}}{M_y} + \frac{M_{zA}}{M_z} \leq 1$$

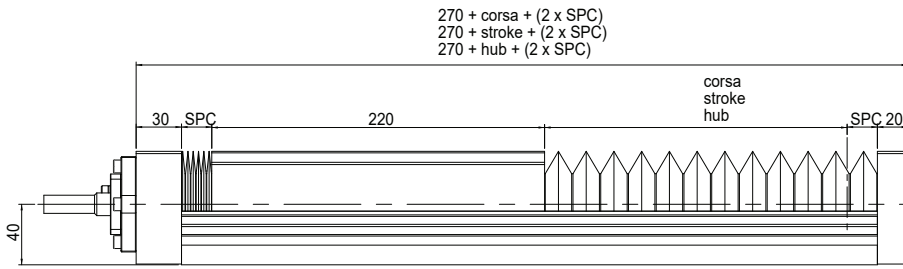
The A letters show the calculated value.  
 Der A Parameter entspricht dem errechneten Wert.  
 La lettera A indica i valori complessivi calcolati

\*\*\* Different types of screws are available, rolled or ground with different tolerances and trapezoidal screws.

\*\*\* Verschiedene Spindelvarianten sind verfügbar. Kugelrollspindeln geschliffen in verschiedenen Genauigkeitsklassen sowie Trapezspindeln.

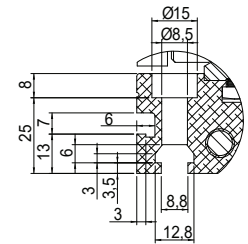
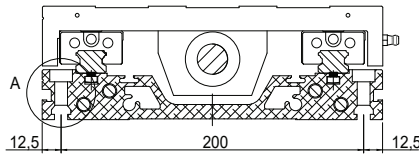
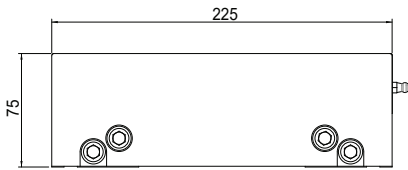
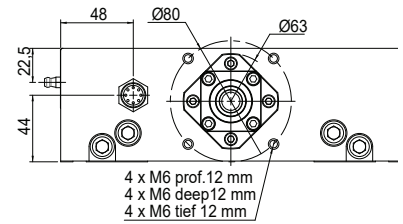
\*\*\* Tipologie di viti disponibili: rullate, rettificata con diversi classi di precisione e trapezoidali.



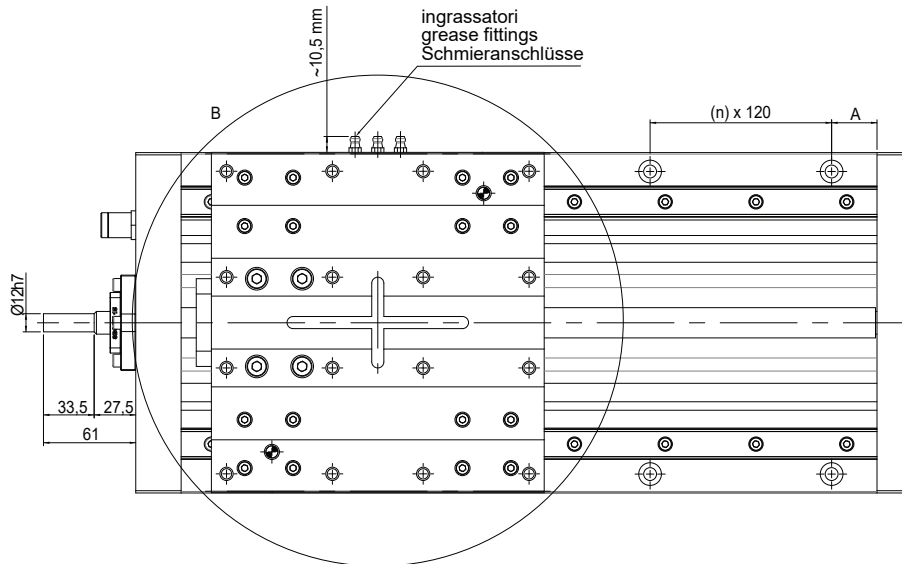


270 + corsa + (2 x SPC)  
 270 + stroke + (2 x SPC)  
 270 + hub + (2 x SPC)

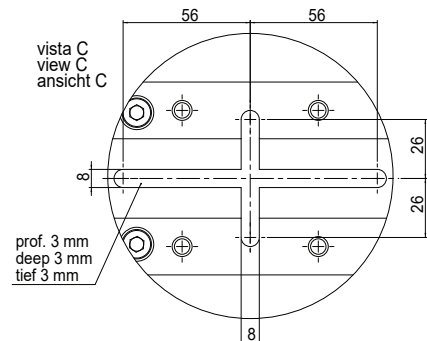
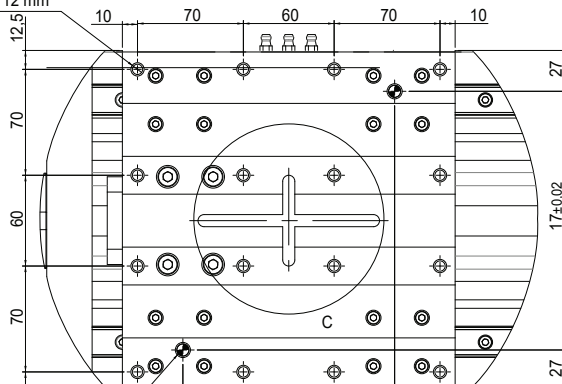
Per le quote A e SPC contattare il nostro ufficio tecnico  
 Please contact the technical department for the A and SPC dimensions  
 Bitte wenden Sie sich an unsere technische Abteilung



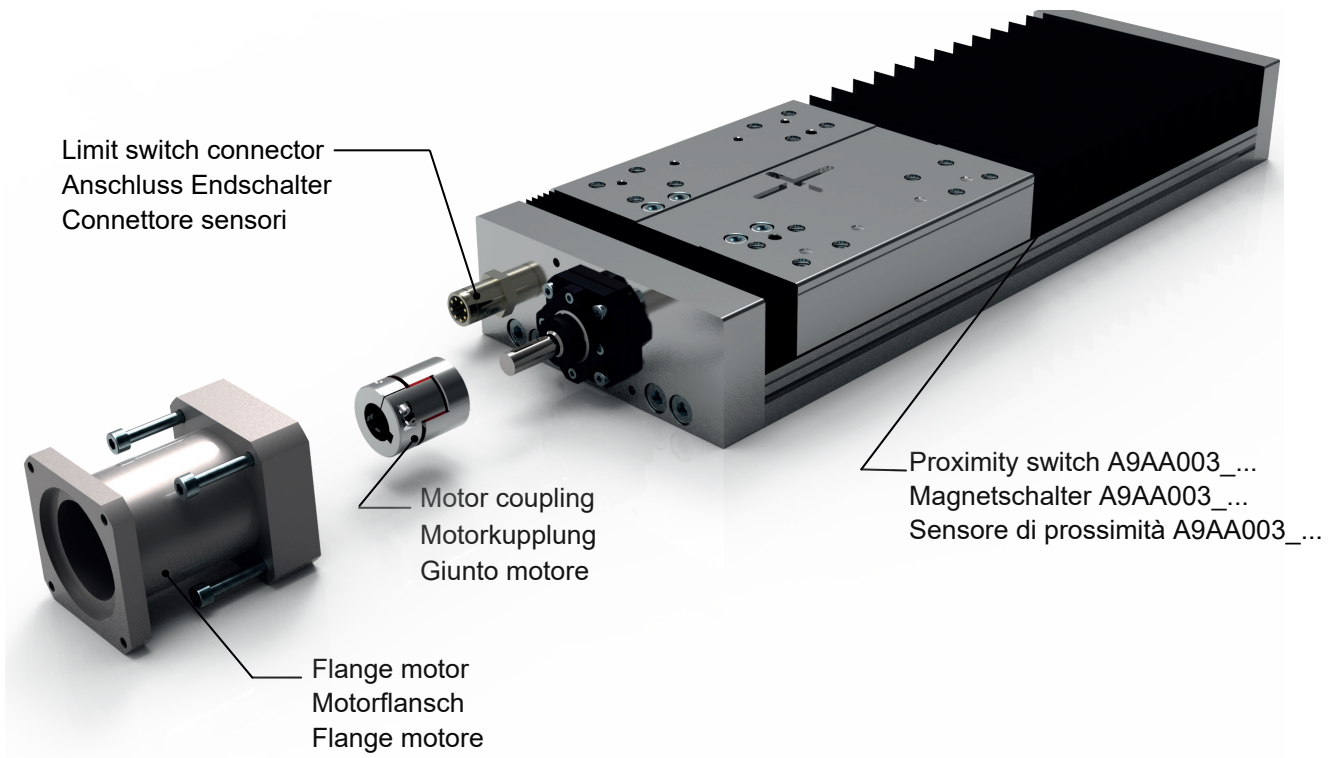
vista A  
 view A  
 ansicht A



16 x M8 prof. 12 mm  
 16 x M8 deep 12 mm  
 16 x M8 tief 12 mm



vista C  
 view C  
 ansicht C



**ORDERING INFORMATION** | Bestallangaben Baureihe | Codici per l'ordinazione

<sup>1</sup>Proximity switch A9AA003\_... | <sup>1</sup>Magnetschalter A9AA003\_... | <sup>1</sup>Sensore di prossimità A9AA003\_...

Part nr.   Ident nr.   Cod.	Cable   Kabel   Cavo	Output   Ausgangsfunktion   Uscita
A9AA003_01	with 2 mt cable   mit 2 mt kabel   con cavo 2 mt	PNP
A9AA003_02	with 2 mt cable   mit 2 mt kabel   con cavo 2 mt	NPN
A9AA003_03	200 mm with M8 plug in   mit 200 mm kabel und M8 stecker   200 mm conn. M8	PNP
A9AA003_04	200 mm with M8 plug in   mit 200 mm kabel und M8 stecker   200 mm conn. M8	NPN
A9AA003_NC	with 2 mt cable   mit 2 mt kabel   con cavo 2 mt	NC

**MTL 225-0500-20 05-A 1**

- Series MTL** | Serie MTL | Serie MTL
- Size 225x75** | Baugröße 225x75 | Grandezza 225x75
- Stroke mm** | Hub mm | Corsa mm
- Screw diam.** | Durchmesser Spindle | Dim. Vite Ø20 mm
- Screw pitch** | Spindelsteigung | Passo vite  
05 = 5 mm  
10 = 10 mm  
20 = 20 mm
- Shaft** | Versionen Antriebswelle | Versione Albero  
0: Without limit switch | Ohne Magnetschalter | Senza sensori  
1: With limit switch | Mit Magnetschalter | Con sensori
- Bellows** | Balg | Soffiretti  
A: With Bellows | Mit Balg | Con soffietti  
0: Without bellows | Ohne Balg | Senza soffietti