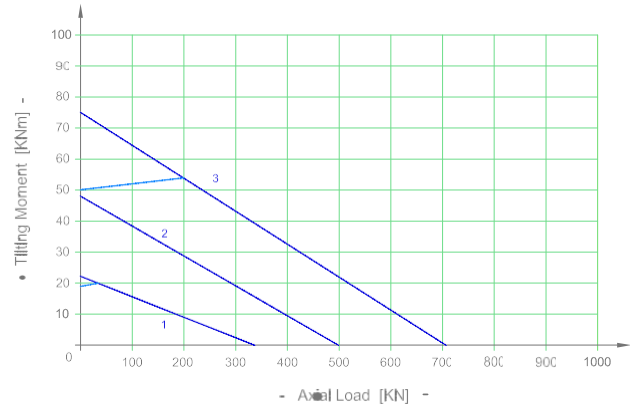
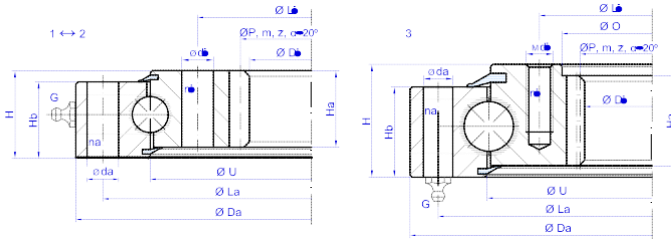


I.16-22-D

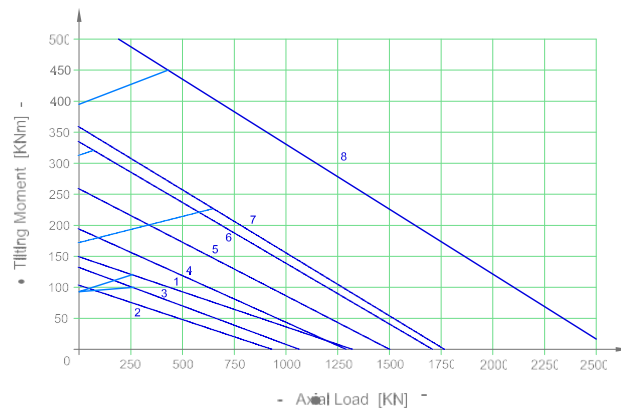
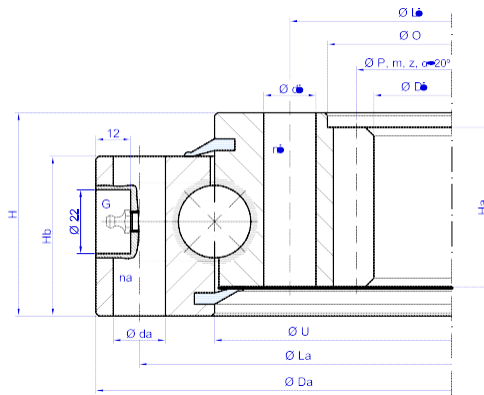


Bearing Type	Dimensions							Fixing holes					Gear teeth			Tooth Force		Mass		
	Da mm	U mm	O mm	Di mm	Ha mm	Hb mm	H mm	La mm	na n°	da mm	Li mm	ni n°	di mm	P mm	m	z n°	Fz nor KN	Fz max KN	Weight KG	
1	1.340.16.00.D.1	340	288	-	216	34	34	39	324	20	9	252	20	9	224	4	56	10,7	14,9	12
2	1.486.16.00.D.1	486	421,5	-	332	34	34	39	462	16	14	378	16	14	340	4	85	10,7	14,9	24
3	1.535.22.00.D.3-V	535	466.5	400	380	40	40	50	510	16	13	420	16	M12x1,25	384	4	96	11	22	32

1 + 2 - G = N°2 x Grease nipples DIN 71412 A M10x1 equally spaced
 3 - G = N°1 x Grease nipples DIN 71412 A M10x1 equally spaced

Ask for a detailed drawing of the bearing, values may differ.

I.25.D

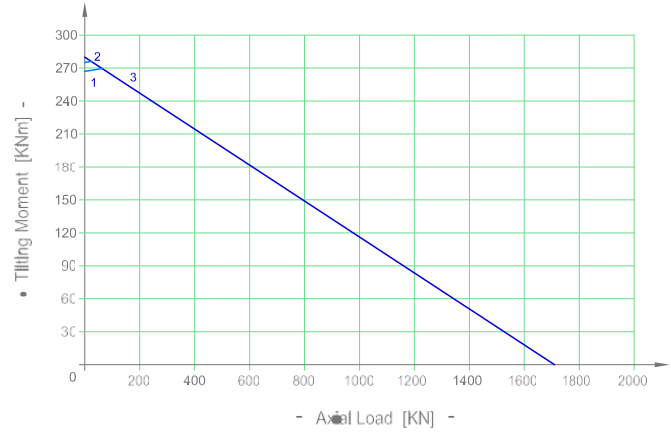
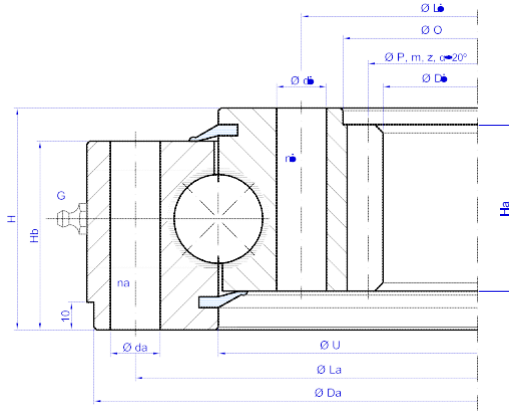


Bearing Type	Dimensions							Fixing holes					Gear teeth			Tooth Force		Mass		
	Da mm	U mm	O mm	Di mm	Ha mm	Hb mm	H mm	La mm	na n°	da mm	Li mm	ni n°	di mm	P mm	m	z n°	Fz nor KN	Fz max KN	Weight KG	
1	1.562.25.15.D.1	560	489	418	385	43	50	60	538	30	14	440	30	14	396	6	66	25,5	36,5	41
2	1.570.25.00.D.1	570	488	410	378	55	55	70	540	18	18	436	18	18	390	6	65	25,7	35,9	54
3	1.635.25.00.D.3.V	635	547	467	439,5	50	50	60	605	24	15	490	16	M16	444	6	74	30,9	43,3	57
4	1.750.25.00.D.1	750	663	575	546	55	55	70	720	20	18	605	20	18	558	6	93	26,4	37	76
5	1.850.25.00.D.1	850	762	677	648	55	55	70	820	24	18	705	24	18	660	6	110	24,9	34,9	91
6	1.950.25.00.D.1	950	862	775	736	55	55	70	920	30	18	805	30	18	752	8	94	33,3	46,6	108
7	1.980.25.00.D.3	975	892	-	784	72	66	84	944	36	18	850	36	M16	800	8	100	43,6	61	135
8	1.1015.25.15.D.1	1015	920	824	784	67	66	82	980	40	18	860	40	18	800	8	100	43,1	61,7	143

G = For the number and the position of the grease nipples, please ask for a detailed drawing of the bearing

Ask for a detailed drawing of the bearing, values may differ.

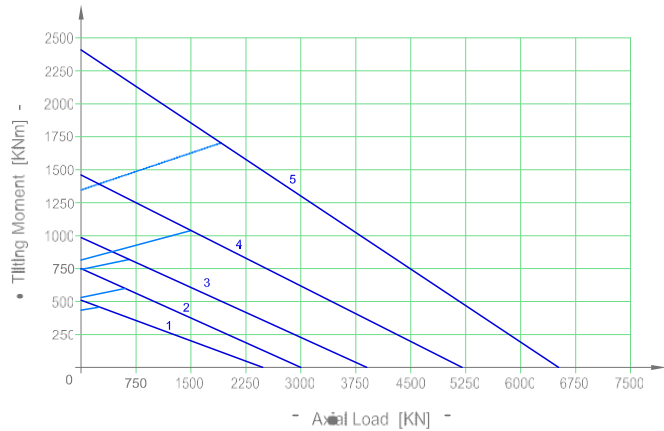
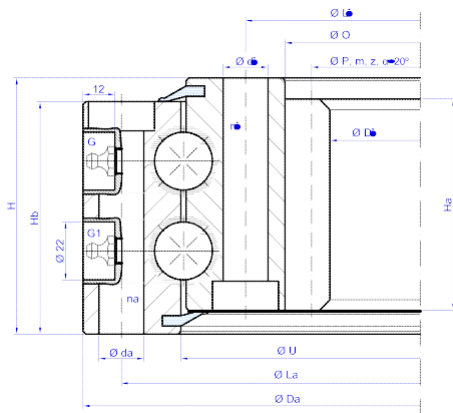
I.32.D



Bearing Type	Dimensions							Fixing holes					Gear teeth			Tooth Force		Mass	
	Da mm	U mm	O mm	Di mm	Ha mm	Hb mm	H mm	La mm	na n°	da mm	Li mm	ni n°	di mm	P mm	m	z n°	Fz nor KN	Fz max KN	Weight KG
1 I.810.32.00.D.1	805	718	630	601	60	68	80	780	20	18	660	20	18	612	6	102	28,8	40,3	110
2 I.815.32.10.D.1	810	720	630	593	60	68	80	780	30	18	660	30	18	608	8	76	37,9	53,1	110
3 I.816.32.10.D.1	815	715	605	568,9	67	75	90	785	18	17	640	18	17	574	7	82	37	51,8	143

G = For the number and the position of the grease nipples, please ask for a detailed drawing of the bearing Ask for a detailed drawing of the bearing, values may differ.

I.2.22-25-30.D



Bearing Type	Dimensions							Fixing holes					Gear teeth			Tooth Force		Mass	
	Da mm	U mm	O mm	Di mm	Ha mm	Hb mm	H mm	La mm	na n°	da mm	Li mm	ni n°	di mm	P mm	m	z n°	Fz nor KN	Fz max KN	Weight KG
1 I.973.2.22.00.D.6	973	899	820	786	80	88	97	944	36	17	850	36	17	800	8	100	36,2	72,4	141
2 I.1165.2.22.00.D.6	1165	1089	1010	962	83	88	98	1134	36	17	1040	36	17	980	10	98	45	90	187
3 I.1200.2.25.00.D.6	1200	1102	1010	963,5	88	96	110	1160	36	21	1040	36	21	980	10	98	71	99	230
4 I.1346.2.30.05.D.6	1345	1225	1115	1061,6	88	98	108	1290	48	21	1150	48	21	1080	10	108	68,9	137,8	326
5 I.1750.2.30.20.D.6	1750	1617	1470	1418	98	110	120	1705	48	25	1525	48	25	1440	12	120	95	140	567

G = For the number and the position of the grease nipples, please ask for a detailed drawing of the bearing Ask for a detailed drawing of the bearing, values may differ.