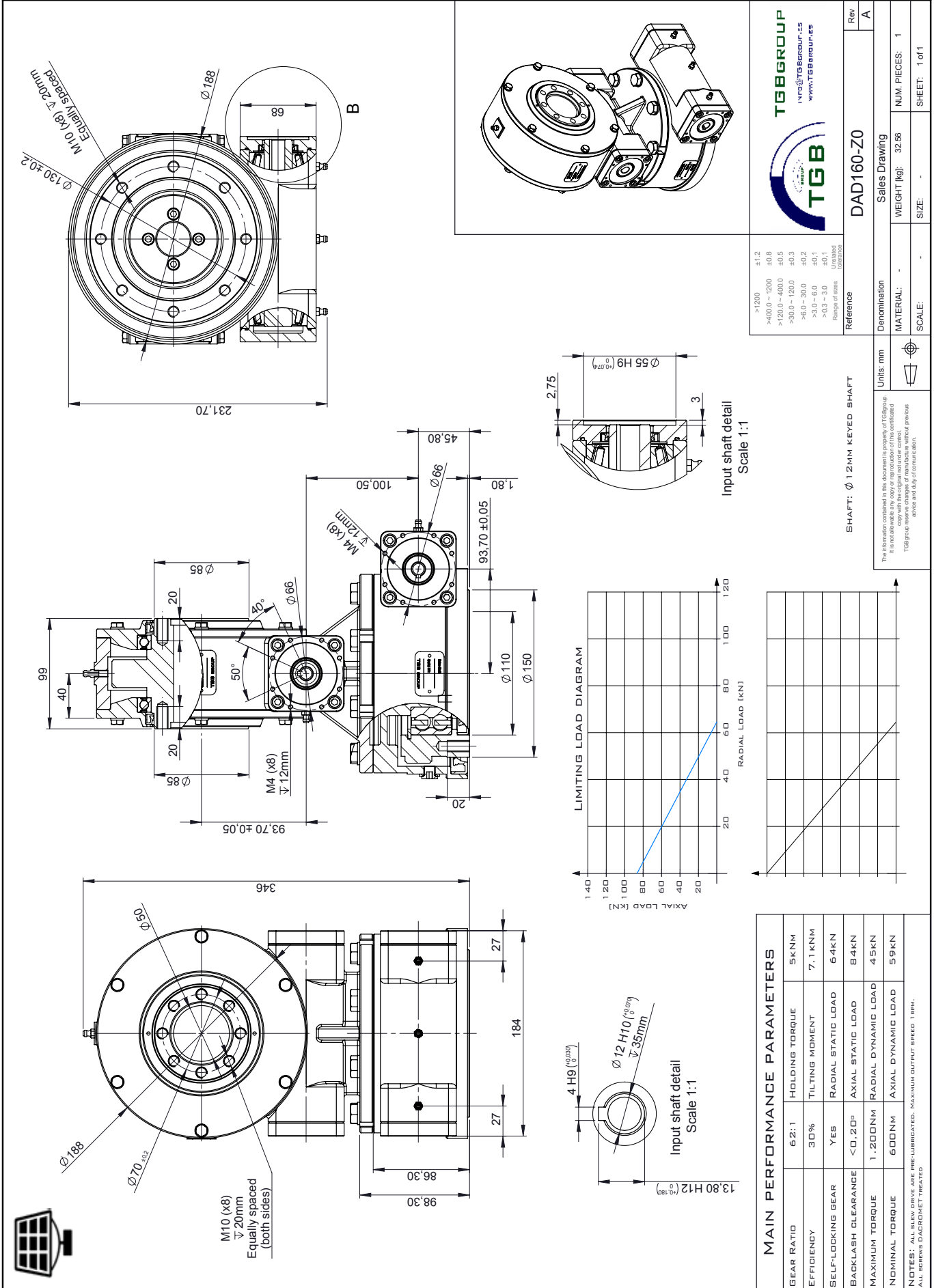


# DAD SERIES



TGB GROUP		TGB GROUP	
www.tgbgroup.es		www.tgbgroup.es	
Reference: DAD160-Z0		Rev: A	
Denomination: Sales Drawing		NUM. PIECES: 1	
MATERIAL: -		WEIGHT (kg): 32.86	
SCALE: -		SIZE: -	
Units: mm		SHEET: 1 of 1	
SHAFT: $\phi$ 12MM KEYED SHAFT			
<p>The information contained in this document is the property of TGB Group. It is not allowed to reproduce or disseminate this information without the prior written consent of TGB Group. For more information, contact your previous advisor and duly contact them.</p>			

MAIN PERFORMANCE PARAMETERS	
GEAR RATIO	62:1
HOLDING TORQUE	5KNM
EFFICIENCY	30%
TILTING MOMENT	7.1 KNM
SELF-LOCKING GEAR	YES
RADIAL STATIC LOAD	64KN
BACKLASH CLEARANCE	<0.20°
AXIAL STATIC LOAD	84KN
MAXIMUM TORQUE	1.200NM
RADIAL DYNAMIC LOAD	45KN
NOMINAL TORQUE	600NM
AXIAL DYNAMIC LOAD	59KN

NOTES: ALL BEW DRIVE ARE PRE-LUBRICATED. MAXIMUM OUTPUT SPEED 1800.  
ALL BEWRE DADROHET TREATED