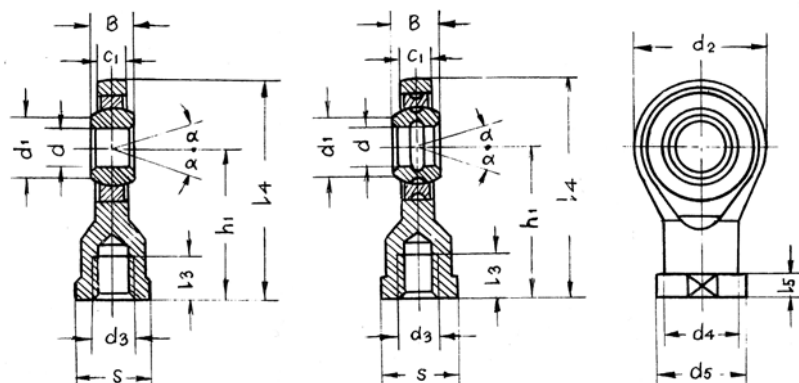


## Kloubová oka s vnitřním závitem série E

Ekvivalent	SKF	SI...E/ SI...ES-2RS
Ekvivalent	INA	SI...ES/SIA...ES GIR...DO GIR...DO-2RS
Ekvivalent	SKF	SI...C SI...C-2RS
Ekvivalent	INA	SI...C SIA...TE-2RS GIR...UK GIR...UK-2RS



Typ	Rozměry [mm]														Zatížení [kN]		$\alpha$	Hmot. [Kg]
	d	B	C <sub>1</sub> max.	d <sub>1</sub> min.	d <sub>2</sub> max.	d <sub>3</sub>	h <sub>1</sub>	l <sub>3</sub> min.	l <sub>4</sub> max.	l <sub>5</sub> max.	d <sub>4</sub> max.	d <sub>5</sub> max.	S	Dynamic	Static			
SI5E		5	6	4.5	7	21	M5	30	11	42	5	10	13	10	3.4	8.1	13	0.016
SI6E		6	6	4.5	8	21	M6	30	11	42	5	11	13	11	3.4	8.1	13	0.017
SI8E		8	8	6.5	10	24	M8	36	15	49	5	13	16	13	5.5	12.9	15	0.035
SI10E		10	9	7.5	13	29	M10	43	15	58	6.5	16	19	16	8.1	17.6	12	0.061
SI12E		12	10	8.5	15	34	M12	50	18	67	7	18	22	18	10.8	24.5	10	0.096
SI15ES	SI15ES-2RS	15	12	10.5	18	40	M14	61	21	81	8	21	26	21	17	36	8	0.162
SI17ES	SI17ES-2RS	17	14	11.5	20	46	M16	67	24	90	10	24	29	24	21	45	10	0.233
SI20ES	SI20ES-2RS	20	16	13.5	24	53	M20x1.5	77	30	104	10	28	34	30	30	60	9	0.324
SI25ES	SI25ES-2RS	25	20	18	29	64	M24x2	94	36	126	12	35	42	36	48	83	7	0.625
SI30ES	SI30ES-2RS	30	22	20	34	73	M30x2	110	45	147	15	42	50	46	62	110	6	0.976
SI35ES	SI35ES-2RS	35	25	22	39	82	M36x3	125	60	167	15	48	58	55	80	146	6	1.52
SI40ES	SI40ES-2RS	40	28	24	45	92	M39x3	142	65	190	18	52	65	60	100	180	7	2.06
SI45ES	SI45ES-2RS	45	32	28	50	102	M42x3	145	65	199	20	58	70	65	127	240	7	2.72
SI50ES	SI50ES-2RS	50	35	31	55	112	M45x3	160	68	221	20	62	75	70	156	290	6	3.57
SI60ES	SI60ES-2RS	60	44	39	66	135	M52x3	175	70	247	20	70	88	80	245	450	6	5.63
SI70ES	SI70ES-2RS	70	49	43	77	160	M56x4	200	80	283	20	80	98	85	315	610	6	8.33
SI80ES	SI80ES-2RS	80	55	48	88	180	M64x4	230	85	325	25	95	110	95	400	750	6	13.04

Uložení ocel/ocel

Typ	Rozměry [mm]														Zatížení [kN]		$\alpha$	Hmot. [Kg]
	d	B	C <sub>1</sub> max.	d <sub>1</sub> min.	d <sub>2</sub> max.	d <sub>3</sub>	h <sub>1</sub>	l <sub>3</sub> min.	l <sub>4</sub> max.	l <sub>5</sub> max.	d <sub>4</sub> max.	d <sub>5</sub> max.	S	Dynamic	Static			
SI6C		6	6	4.5	8	21	M6	30	11	42	5	11	13	11	3.4	8.1	13	0.017
SI8C		8	8	6.5	10	24	M8	36	15	49	5	13	16	13	5.5	12.9	15	0.035
SI10C		10	9	7.5	13	29	M10	43	15	58	6.5	16	19	16	8.1	17.6	12	0.061
SI12C		12	10	8.5	15	34	M12	50	18	67	7	18	22	18	10.8	24.5	10	0.096
SI15C		15	12	10.5	18	40	M14	61	21	81	8	21	26	21	17	36	8	0.162
SI17C		17	14	11.5	20	48	M16	67	24	90	10	24	29	24	21	45	10	0.233
SI20C		20	16	13.5	24	53	M20x1.5	77	30	104	10	28	34	30	30	60	9	0.324
SI25C		25	20	18	29	64	M24x2	94	36	126	12	35	42	36	48	83	7	0.625
SI30C		30	22	20	34	73	M30x2	110	45	147	15	42	50	46	62	110	6	0.976
	SI35C-2RS	35	25	22	39	82	M36x3	125	60	167	15	48	58	55	80	146	6	1.52
	SI40C-2RS	40	28	24	45	92	M39x3	142	65	190	18	52	65	60	100	180	7	2.06
	SI45C-2RS	45	32	28	50	102	M42x3	145	65	199	20	58	70	65	127	240	7	2.72
	SI50C-2RS	50	35	31	55	112	M45x3	160	68	221	20	62	75	70	156	290	6	3.57
	SI60C-2RS	60	44	39	66	135	M52x3	175	70	247	20	70	88	80	245	450	6	5.63
	SI70C-2RS	70	49	43	77	160	M56x4	200	80	283	20	80	98	85	315	610	6	8.33
	SI80C-2RS	80	55	48	88	180	M64x4	230	85	325	25	95	110	95	400	750	6	13.04

Uložení ocel/PTFE – bezúdržbové