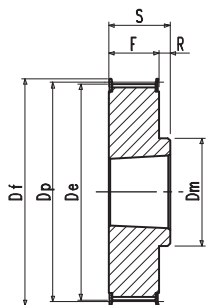


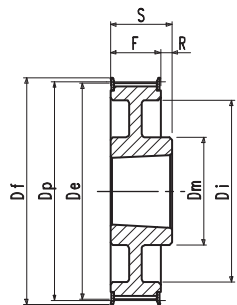
Řemenice pro upínací pouzdra TAPER-LOCK®

Pro řemeny

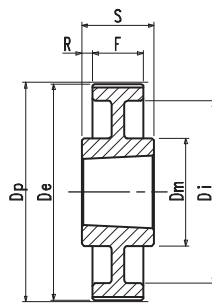
L



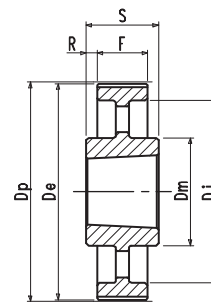
Typ 8F



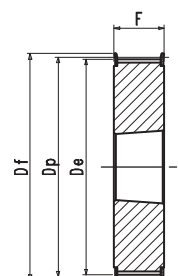
Typ 8WF



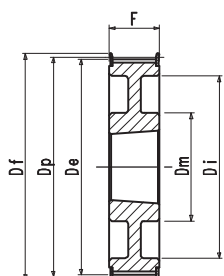
Typ 7W



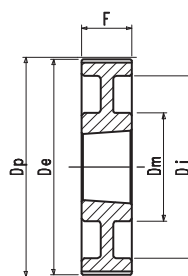
Typ 7A



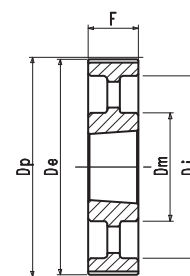
Typ 3F



Typ 3WF



Typ 3W



Typ 3A

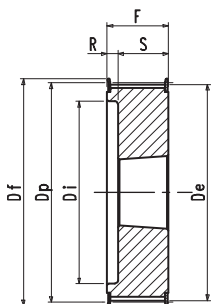
L 050 Rozteč 3/8" (9,525 mm) pro řemeny šířky 1/2" (12,7 mm)

Popis	Označení	Obj. č.	Typ	Typ přírub	Pouzdro	Max Ø hřídele	Dp [mm]	De [mm]	Df [mm]	Dm [mm]	Di [mm]	F [mm]	S [mm]	R [mm]	Hmot. [kg]	
Ocel	S přírubami	18L 050	TL 50018	8F	F22	1108	28	54,57	53,81	60	45	19,0	22,0	3	0,2	
		19L 050	TL 50019	8F	F24	1108	28	57,61	56,84	64	45	19,0	22,0	3	0,2	
		20L 050	TL 50020	8F	F25	1108	28	60,64	59,88	66	48	19,0	22,0	3	0,2	
		21L 050	TL 50021	8F	F26	1108	28	63,67	62,91	70	48	19,0	22,0	3	0,3	
		22L 050	TL 50022	8F	F27	1108	28	66,70	65,94	75	51	19,0	22,0	3	0,3	
		23L 050	TL 50023	8F	F28	1108	28	69,73	68,97	79	54	19,0	22,0	3	0,4	
		24L 050	TL 50024	8F	F28	1108	28	72,77	72,00	79	54	19,0	22,0	3	0,4	
		25L 050	TL 50025	8F	F29	1108	28	75,80	75,04	83	56	19,0	22,0	3	0,5	
		26L 050	TL 50026	8F	F30	1108	28	78,83	78,07	87	60	19,0	22,0	3	0,5	
		27L 050	TL 50027	8F	F30	1108	28	81,86	81,10	87	62	19,0	22,0	3	0,6	
		28L 050	TL 50028	8F	F31	1108	28	84,89	84,13	91	65	19,0	22,0	3	0,6	
		30L 050	TL 50030	8F	F33	1108	28	90,96	90,20	97	70	19,0	22,0	3	0,8	
		32L 050	TL 50032	8F	F34	1108	28	97,02	96,26	102	74	19,0	22,0	3	0,9	
		36L 050	TL 50036	8F	F37	1108	28	109,15	108,39	115	85	19,0	22,0	3	1,2	
Litina	Bez přírub	40L 050	TL 50040	8F	F40	1610	42	121,28	120,51	128	88	19,0	25,0	3	1,5	
		44L 050	TL 50044	8WF	F45	1610	42	133,40	132,64	142	88	110	19,0	25,0	3	1,8
		48L 050	TL 50048	8WF	F48	1610	42	145,53	144,77	150	88	120	19,0	25,0	3	2,3
		60L 050	TL 50060	7W		1610	42	181,91	181,15		92	166	19,0	25,0	3	2,0
		72L 050	TL 50072	7A		1610	42	218,30	217,53		92	202	19,0	25,0	3	3,0
		84L 050	TL 50084	7A		1610	42	254,68	253,90		92	236	19,0	25,0	3	4,0
		96L 050	TL 50096	7A		2012	50	291,06	290,30		106	270	19,0	32,0	6,5	5,5
		120L 050	TL 50120	7A		2012	50	363,83	363,07		106	343	19,0	32,0	6,5	6,8

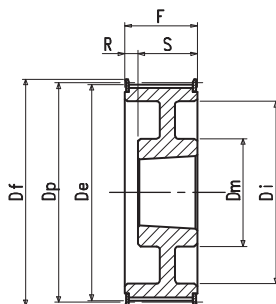
Pro řemeny

L

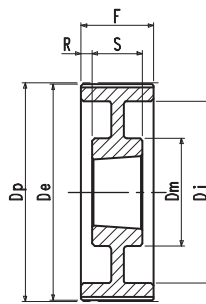
Řemenice pro upínací pouzdra
TAPER-LOCK®



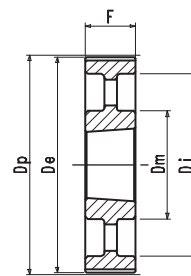
Typ 5F



Typ 5WF



Typ 9W



Typ 3A

L 075 Rozteč 3/8" (9,525 mm) pro řemeny šířky 3/4" (19,05 mm)

Popis	Označení	Obj. č.	Typ	Typ příruba	Pouzdro	Max Ø hřídele	Dp [mm]	De [mm]	Df [mm]	Dm [mm]	Di [mm]	F [mm]	S [mm]	R [mm]	Hmot. [kg]
Ocel	S přírubami	18 L 075	3F	F22	1108	28	54,57	53,81	60			25,0	25,0		0,2
		19 L 075	3F	F24	1108	28	57,61	56,84	64			25,0	25,0		0,3
		20 L 075	3F	F25	1108	28	60,64	59,88	66			25,0	25,0		0,3
		21 L 075	3F	F26	1108	28	63,67	62,91	70			25,0	25,0		0,4
		22 L 075	3F	F27	1108	28	66,70	65,94	75			25,0	25,0		0,4
		23 L 075	3F	F28	1108	28	69,73	68,97	79			25,0	25,0		0,4
		24 L 075	3F	F28	1108	28	72,77	72,00	79			25,0	25,0		0,5
		25 L 075	3F	F29	1108	28	75,80	75,04	83			25,0	25,0		0,6
		26 L 075	3F	F30	1108	28	78,83	78,07	87			25,0	25,0		0,6
		27 L 075	3F	F30	1108	28	81,86	81,10	87			25,0	25,0		0,7
		28 L 075	3F	F31	1108	28	84,89	84,13	91			25,0	25,0		0,7
		30 L 075	3F	F33	1108	28	90,96	90,20	97			25,0	25,0		0,9
		32 L 075	3F	F34	1108	28	97,02	96,26	102			25,0	25,0		1,0
		36 L 075	3F	F37	1610	42	109,15	108,39	115			25,0	25,0		1,2
		40 L 075	3F	F40	1610	42	121,28	120,51	128			25,0	25,0		1,7
		44 L 075	3WF	F45	1610	42	133,40	132,64	142	90	110	25,0	25,0		2,1
48 L 075	3WF	F48	1610	42	145,53	144,77	150	92	120	25,0	25,0		2,5		
Litina	Bez přírub	60 L 075	3W		1610	42	181,91	181,15		92	166	25,0	25,0		3,0
		72 L 075	3A		1610	42	218,30	217,53		92	202	25,0	25,0		4,0
		84 L 075	7A		2012	50	254,68	253,90		92	236	25,0	32,0		5,2
		96 L 075	7A		2012	50	291,06	290,30		106	270	25,0	32,0	3,5	6,5
		120 L 075	7A		2012	50	363,83	363,07		106	343	25,0	32,0	3,5	7,6

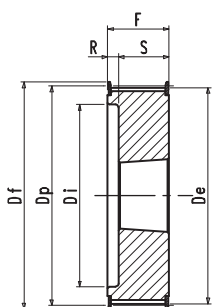
L 100 Rozteč 3/8" (9,525 mm) pro řemeny šířky 1" (25,40 mm)

Popis	Označení	Obj. č.	Typ	Typ příruba	Pouzdro	Max Ø hřídele	Dp [mm]	De [mm]	Df [mm]	Dm [mm]	Di [mm]	F [mm]	S [mm]	R [mm]	Hmot. [kg]
Ocel	S přírubami	18 L 100	5F	F22	1108	28	54,57	53,81	60		38	31,0	22,0	9,0	0,2
		19 L 100	5F	F24	1108	28	57,61	56,84	64		38	31,0	22,0	9,0	0,3
		20 L 100	5F	F25	1108	28	60,64	59,88	66		45	31,0	22,0	9,0	0,4
		21 L 100	5F	F26	1108	28	63,67	62,91	70		45	31,0	22,0	9,0	0,4
		22 L 100	5F	F27	1108	28	66,70	65,94	75		48	31,0	22,0	9,0	0,4
		23 L 100	5F	F28	1108	28	69,73	68,97	79		52	32,0	22,0	10,0	0,5
		24 L 100	5F	F28	1108	28	72,77	72,00	79		52	32,0	22,0	10,0	0,6
		25 L 100	5F	F29	1108	28	75,80	75,04	83		54	32,0	22,0	10,0	0,6
		26 L 100	5F	F30	1108	28	78,83	78,07	87		60	32,0	22,0	10,0	0,7
		27 L 100	5F	F30	1108	28	81,86	81,10	91		60	32,0	22,0	10,0	0,8
		28 L 100	5F	F31	1108	28	84,89	84,13	91		65	32,0	22,0	10,0	0,8
		30 L 100	5F	F33	1210	32	90,96	90,20	97		71	32,0	25,0	10,0	0,9
		32 L 100	5F	F34	1210	32	97,02	96,26	102		75	32,0	25,0	7,0	1,0
		36 L 100	5F	F37	1610	42	109,15	108,39	115		86	32,0	25,0	7,0	1,4
		40 L 100	5F	F40	1610	42	121,28	120,51	128		96	32,0	25,0	7,0	1,7
		44 L 100	5WF	F45	1610	42	133,40	132,64	142	90	110	32,0	25,0		2,3
48 L 100	5WF	F48	1610	42	145,53	144,77	150	92	120	32,0	25,0	7,0	2,7		
Litina	Bez přírub	60 L 100	9W		1610	42	181,91	181,15		92	166	32,0	25,0	3,5	2,4
		72 L 100	3A		2012	50	218,30	217,53		92	202	32,0	32,0		4,4
		84 L 100	3A		2012	50	254,68	253,90		92	236	32,0	32,0		6,0
		96 L 100	3A		2012	50	291,06	290,30		106	270	32,0	32,0		7,1
		120 L 100	3A		2012	50	363,83	363,07		106	343	32,0	32,0		8,5

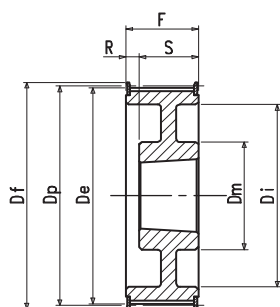
Řemenice pro upínací pouzdra TAPER-LOCK®

Pro řemeny

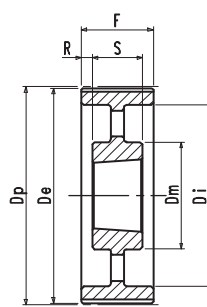
H



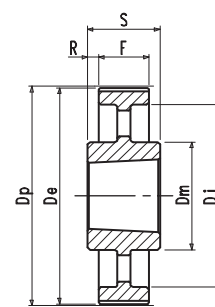
Typ 5F



Typ 5WF



Typ 9A



Typ 7A

H 100 Rozteč 1/2" (12,7 mm) pro řemeny šířky 1" (25,40 mm)

Popis	Označení	Obj. č.	Typ	Typ příruba	Pouzdro	Max ø hřídele	Dp [mm]	De [mm]	Df [mm]	Dm [mm]	Di [mm]	F [mm]	S [mm]	R [mm]	Hmot. [kg]	
Ocel	S přírubami	16 H 100	TH 10016	5F	F26	1108	28	64,68	63,31	70		45	31,0	22,0	9,0	0,4
		18 H 100	TH 10018	5F	F28	1210	32	72,77	71,39	79		52	31,0	25,0	6,0	0,5
		19 H 100	TH 10019	5F	F29	1210	32	76,81	75,44	83		56	31,0	25,0	6,0	0,6
		20 H 100	TH 10020	5F	F30	1210	32	80,55	79,48	87		60	31,0	25,0	6,0	0,7
		21 H 100	TH 10021	5F	F31	1210	32	84,89	83,52	91		64	32,0	25,0	7,0	0,8
		22 H 100	TH 10022	5F	F32	1210	32	88,94	87,56	93		67	32,0	25,0	7,0	0,9
		23 H 100	TH 10023	5F	F33	1610	42	92,98	91,61	97		70	32,0	25,0	7,0	0,9
		24 H 100	TH 10024	5F	F34	1610	42	97,02	95,65	102		74	32,0	25,0	7,0	1,0
		25 H 100	TH 10025	5F	F35	1610	42	101,06	99,69	106		77	32,0	25,0	7,0	1,0
		26 H 100	TH 10026	5F	F36	1610	42	105,11	103,73	112		82	32,0	25,0	7,0	1,2
		27 H 100	TH 10027	5F	F37	1610	42	109,15	107,78	115		85	32,0	25,0	7,0	1,3
		28 H 100	TH 10028	5F	F38	1610	42	113,19	111,82	120		90	32,0	25,0	7,0	1,5
		30 H 100	TH 10030	5F	F40	1610	42	121,28	119,90	128		98	32,0	25,0	7,0	1,7
		32 H 100	TH 10032	5WF	F42	1610	42	129,36	127,99	135	80	106	32,0	25,0	7,0	2,0
		36 H 100	TH 10036	5WF	F48	1610	42	145,53	144,16	150	92	121	32,0	25,0	7,0	2,7
		40 H 100	TH 10040	5WF	F52	1610	42	161,70	160,33	168	92	138	32,0	25,0	7,0	3,6
44 H 100	TH 10044	3WF	F55	2012	50	177,87	176,50	184	106	152	32,0	32,0		3,8		
48 H 100	TH 10048	3WF	F59	2012	50	194,04	192,67	200	106	169	32,0	32,0		3,2		
Litina	Bez přírub	60 H 100	TH 10060	9A		2012	50	242,55	241,18		92	223	34,0	32,0	1,0	4,8
		72 H 100	TH 10072	9A		2012	50	291,06	289,69		92	270	34,0	32,0	1,0	5,7
		84 H 100	TH 10084	9A		2012	50	339,57	338,20		92	318	34,0	32,0	1,0	6,8
		96 H 100	TH 10096	7A		2517	60	388,08	386,71		106	366	34,0	45,0	5,5	8,2
		120 H 100	TH 10120	7A		2517	60	485,10	483,73		106	462	34,0	45,0	5,5	12,1

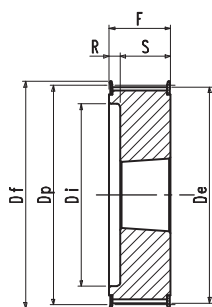
H 150 Rozteč 1/2" (12,7 mm) pro řemeny šířky 1 1/2" (38,10 mm)

Popis	Označení	Obj. č.	Typ	Typ příruba	Pouzdro	Max ø hřídele	Dp [mm]	De [mm]	Df [mm]	Dm [mm]	Di [mm]	F [mm]	S [mm]	R [mm]	Hmot. [kg]	
Ocel	S přírubami	18 H 150	TH 15018	5F	F28	1210	32	72,77	71,39	79		52	45,0	25,0	20,0	0,6
		19 H 150	TH 15019	5F	F29	1210	32	76,81	75,44	83		56	45,0	25,0	20,0	0,7
		20 H 150	TH 15020	5F	F30	1210	32	80,55	79,48	87		60	45,0	25,0	20,0	0,8
		21 H 150	TH 15021	5F	F31	1210	32	84,89	83,52	91		64	45,0	25,0	20,0	1,0
		22 H 150	TH 15022	5F	F32	1210	32	88,94	87,56	93		67	45,0	25,0	20,0	1,2
		23 H 150	TH 15023	5F	F33	1610	42	92,98	91,61	97		70	45,0	25,0	20,0	1,3
		24 H 150	TH 15024	5F	F34	1610	42	97,02	95,65	102		74	45,0	25,0	20,0	1,0
		25 H 150	TH 15025	5F	F35	1610	42	101,06	99,69	106		77	45,0	25,0	20,0	1,2
		26 H 150	TH 15026	5F	F36	1610	42	105,11	103,73	112		82	45,0	25,0	20,0	1,4
		27 H 150	TH 15027	5F	F37	1610	42	109,15	107,78	115		85	45,0	25,0	20,0	1,6
		28 H 150	TH 15028	5F	F38	1610	42	113,19	111,82	120		90	45,0	25,0	20,0	1,8
		30 H 150	TH 15030	5F	F40	1610	42	121,28	119,90	128		98	45,0	25,0	20,0	2,3
		32 H 150	TH 15032	5WF	F42	1610	42	129,36	127,99	135	80	106	45,0	25,0	20,0	2,3
		36 H 150	TH 15036	5WF	F48	1610	42	145,53	144,16	150	92	121	45,0	25,0	20,0	3,1
		40 H 150	TH 15040	5WF	F52	1610	42	161,70	160,33	168	92	138	45,0	25,0	20,0	4,0
		44 H 150	TH 15044	5WF	F55	2012	50	177,87	176,50	184	106	152	45,0	32,0	13,0	4,4
48 H 150	TH 15048	5WF	F59	2012	50	194,04	192,67	200	106	169	45,0	32,0	13,0	4,8		
Litina	Bez přírub	60 H 150	TH 15060	9A		2012	50	242,55	241,18		92	223	46,0	32,0	7,5	5,4
		72 H 150	TH 15072	9A		2012	50	291,06	289,69		92	270	46,0	32,0	7,5	6,5
		84 H 150	TH 15084	9A		2012	50	339,57	338,20		92	318	46,0	32,0	7,5	8,4
		96 H 150	TH 15096	9A		2517	60	388,08	386,71		106	366	46,0	45,0	0,5	11,0
		120 H 150	3E 73120	9A		2517	60	485,10	483,73		106	462	46,0	45,0	0,5	14,8

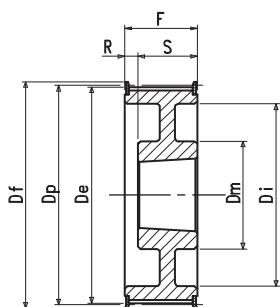
Pro řemeny

H

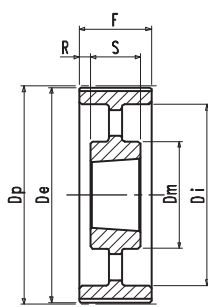
Řemenice pro upínací pouzdra
TAPER-LOCK®



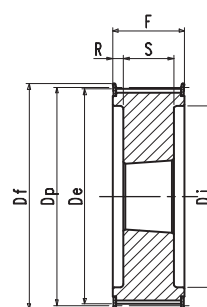
Typ 5F



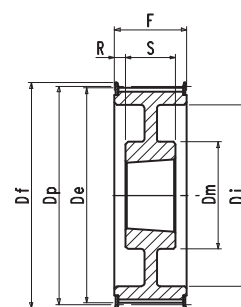
Typ 5WF



Typ 9A



Typ 4F



Typ 4WF

H 200 Rozteč 1/2" (12,7 mm) pro řemeny šířky 2" (50,80 mm)

Popis	Označení	Obj. č.	Typ	Typ příruby	Pouzdro	Max Ø hřídele	Dp [mm]	De [mm]	Df [mm]	Dm [mm]	Di [mm]	F [mm]	S [mm]	R [mm]	Hmot. [kg]	
Ocel	S přírubami	18 H 200	TH 20018	5F	F28	1210	32	72,77	71,39	79		52	58,0	25,0	33,0	0,8
		19 H 200	TH 20019	5F	F29	1210	32	76,81	75,44	83		56	58,0	25,0	33,0	0,9
		20 H 200	TH 20020	5F	F30	1610	42	80,55	79,48	87		60	58,0	25,0	33,0	1,0
		21 H 200	TH 20021	5F	F31	1610	42	84,89	83,52	91		64	58,0	25,0	33,0	1,7
		22 H 200	TH 20022	5F	F32	1610	42	88,94	87,56	93		67	58,0	25,0	33,0	1,5
		23 H 200	TH 20023	5F	F33	1610	42	92,98	91,61	97		70	58,0	25,0	33,0	1,8
		24 H 200	TH 20024	5F	F34	1610	42	97,02	95,65	102		74	58,0	25,0	33,0	1,5
		25 H 200	TH 20025	5F	F35	1610	42	101,06	99,69	106		77	58,0	25,0	33,0	1,5
		26 H 200	TH 20026	5F	F36	1610	42	105,11	103,73	112		82	58,0	25,0	33,0	1,8
		27 H 200	TH 20027	5F	F37	1610	42	109,15	107,78	115		85	58,0	25,0	33,0	1,9
		28 H 200	TH 20028	5F	F38	1610	42	113,19	111,82	120		90	58,0	25,0	33,0	1,9
		30 H 200	TH 20030	5F	F40	1610	42	121,28	119,90	128		98	58,0	25,0	33,0	2,3
		32 H 200	TH 20032	5F	F42	2012	50	129,36	127,99	135		106	58,0	32,0	26,0	3,0
		36 H 200	TH 20036	5WF	F48	2012	50	145,53	144,16	150	102	121	58,0	32,0	26,0	3,0
		40 H 200	TH 20040	5WF	F52	2012	50	161,70	160,33	168	106	140	58,0	32,0	26,0	3,6
		44 H 200	TH 20044	5WF	F55	2012	50	177,87	176,50	184	106	150	58,0	32,0	26,0	4,0
48 H 200	TH 20048	5WF	F59	2517	60	194,04	192,67	200	119	168	58,0	45,0	13,0	4,6		
Litina	Bez přírub	60 H 200	TH 20060	9A		2517	60	242,55	241,18		119	223	60,0	45,0	7,5	7,0
		72 H 200	TH 20072	9A		2517	60	291,06	289,69		119	270	60,0	45,0	7,5	8,0
		84 H 200	TH 20084	9A		2517	60	339,57	338,20		119	318	60,0	45,0	7,5	9,0
		96 H 200	TH 20096	9A		2517	60	388,08	386,71		119	366	60,0	45,0	7,5	10,0
		120 H 200	TH 20120	9A		2517	60	485,10	483,73		119	462	60,0	45,0	7,5	13,4

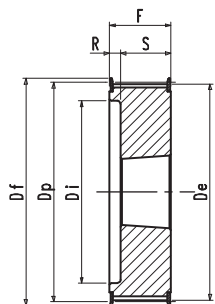
H 300 Rozteč 1/2" (12,7 mm) pro řemeny šířky 3" (76,20 mm)

Popis	Označení	Obj. č.	Typ	Typ příruby	Pouzdro	Max Ø hřídele	Dp [mm]	De [mm]	Df [mm]	Dm [mm]	Di [mm]	F [mm]	S [mm]	R [mm]	Hmot. [kg]	
Ocel	S přírubami	20 H 300	TH 30020	4F	F31	1615	42	80,85	79,48	87		65	84,0	38,0	23,0	1,5
		21 H 300	TH 30021	4F	F32	1615	42	84,89	83,52	91		65	84,0	38,0	23,0	1,2
		22 H 300	TH 30022	4F	F33	1615	42	88,94	87,56	93		67	84,0	38,0	23,0	1,6
		23 H 300	TH 30023	4F	F34	1615	42	92,98	91,61	97		70	84,0	38,0	23,0	1,8
		24 H 300	TH 30024	4F	F35	1615	42	97,02	95,65	102		74	84,0	38,0	23,0	2,0
		25 H 300	TH 30025	4F	F36	1615	42	101,06	99,69	106		77	84,0	38,0	23,0	2,0
		26 H 300	TH 30026	4F	F37	1615	42	105,11	103,73	112		82	84,0	38,0	23,0	2,7
		27 H 300	TH 30027	4F	F38	2012	50	109,15	107,78	115		85	84,0	32,0	26,0	3,0
		28 H 300	TH 30028	4F	F40	2012	50	113,19	111,82	120		90	84,0	32,0	26,0	2,4
		30 H 300	TH 30030	4F	F42	2012	50	121,28	119,90	128		98	84,0	32,0	26,0	2,9
		32 H 300	TH 30032	4F	F48	2517	60	129,36	127,99	135		106	84,0	45,0	19,5	3,3
		36 H 300	TH 30036	4WF	F52	2517	60	145,53	144,16	150		121	84,0	45,0	19,5	4,5
		40 H 300	TH 30040	4WF	F55	2517	60	161,70	160,33	168		138	84,0	45,0	19,5	6,0
		44 H 300	TH 30044	4WF	F59	2517	60	177,87	176,50	184	119	150	86,0	45,0	20,5	6,6
		48 H 300	TH 30048	4WF		2517	60	194,04	192,67	200	119	168	86,0	45,0	20,5	7,6
		Litina	Bez přírub	60 H 300	TH 30060	9A		2517	60	242,55	241,18		119	223	86,0	45,0
72 H 300	TH 30072			9A		2517	60	291,06	289,69		119	270	86,0	45,0	20,5	10,4
84 H 300	TH 30084			9A		2517	60	339,57	338,20		119	318	86,0	45,0	20,5	12,5
96 H 300	TH 30096			9A		3030	75	388,08	386,71		150	366	86,0	76,0	5,0	14,2
120 H 300	TH 30120			9A		3030	75	485,10	483,73		150	462	86,0	76,0	5,0	18,8

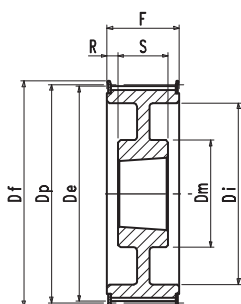
Řemenice pro upínací pouzdra TAPER-LOCK®

Pro řemeny

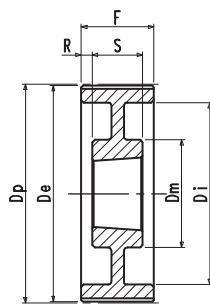
XH



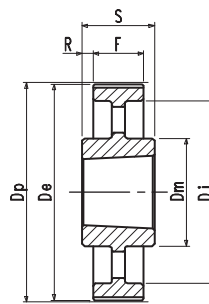
Typ 5F



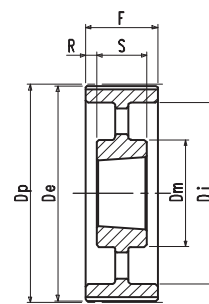
Typ 4WF



Typ 9W



Typ 7A



Typ 9A

XH 200 Rozteč 7/8" (22,225 mm) pro řemeny šířky 2" (50,80 mm)

Popis	Označení	Obj. č.	Typ	Typ příruby	Pouzdro	Max ø hřídele	Dp [mm]	De [mm]	Df [mm]	Dm [mm]	Di [mm]	F [mm]	S [mm]	R [mm]	Hmot. [kg]
Ocel	S přírubami	18 XH 200	TXH 2018	5F	F44	2517	60	127.34	124.55	140		95	64	45	19
		20 XH 200	TXH 2020	5F	F49	2517	60	141.49	138.69	154		110	64	45	19
		22 XH 200	TXH 2022	5F	F52	2517	60	155.64	152.84	168		120	64	45	19
		24 XH 200	TXH 2024	5F	F55	2517	60	169.79	166.99	184		135	64	45	19
		26 XH 200	TXH 2026	5F	F59	2517	60	183.94	181.14	200		150	64	45	19
		28 XH 200	TXH 2028	4WF	F61	2517	60	198.08	195.29	212	120	165	64	45	9,5
		30 XH 200	TXH 2030	4WF	F62	2517	60	212.23	209.44	226	120	180	64	45	9,5
		32 XH 200	TXH 2032	4WF	F64	2517	60	226.38	223.59	240	120	195	64	45	9,5
		40 XH 200	TXH 2040	4WF	F70	3020	75	282.98	280.18	296	160	245	64	51	9,5
		48 XH 200	TXH 2048	9W		3020	75	339.57	336.78		160	300	64	51	6,5
Litina	Bez přírub	60 XH 200	TXH 2060	7A		3535	90	424.47	421.67		190	385	64	89	12,5
		72 XH 200	TXH 2072	7A		3535	90	509.4	506,56		190	470	64	89	12,5
		84 XH 200	TXH 2084	7A		3535	90	594.25	591,46		190	555	64	89	12,5
		96 XH 200	TXH 2096	7A		3535	90	679.15	676,35		190	640	64	89	12,5
		120 XH 200	TXH 2120	7A		3535	90	848.93	846,14		190	810	64	89	12,5

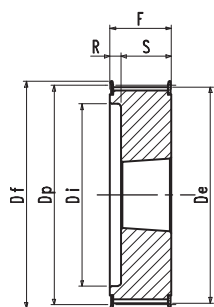
XH 300 Rozteč 7/8" (22,225 mm) pro řemeny šířky 3" (76,20 mm)

Popis	Označení	Obj. č.	Typ	Typ příruby	Pouzdro	Max ø hřídele	Dp [mm]	De [mm]	Df [mm]	Dm [mm]	Di [mm]	F [mm]	S [mm]	R [mm]	Hmot. [kg]
Ocel	S přírubami	18 XH 300	TXH 3018	5F	F44	2517	60	127.34	124.55	140		95	64	45	19
		20 XH 300	TXH 3020	5F	F49	2517	60	141.49	138.69	154		110	64	45	19
		22 XH 300	TXH 3022	5F	F52	2517	60	155.64	152.84	168		120	64	45	19
		24 XH 300	TXH 3024	5F	F55	2517	60	169.79	166.99	184		135	64	45	19
		26 XH 300	TXH 3026	5F	F59	2517	60	183.94	181.14	200		150	64	45	19
		28 XH 300	TXH 3028	5F	F61	3020	75	198.08	195.29	212	120	165	64	45	9,5
		30 XH 300	TXH 3030	5F	F62	3020	75	212.23	209.44	226	120	180	64	45	9,5
		32 XH 300	TXH 3032	5F	F64	3020	75	226.38	223.59	240	120	195	64	45	9,5
		40 XH 300	TXH 3040	4WF	F70	3020	75	282.98	280.18	296	160	245	64	51	9,5
		48 XH 300	TXH 3048	9A		3020	75	339.57	336.78		160	300	64	51	6,5
Litina	Bez přírub	60 XH 300	TXH 3060	9A		3535	90	424.47	421.67		190	385	64	89	12,5
		72 XH 300	TXH 3072	9A		3535	90	509.4	506,56		190	470	64	89	12,5
		84 XH 300	TXH 3084	7A		4040	100	594.25	591,46		190	555	64	89	12,5
		96 XH 300	TXH 3096	7A		4040	100	679.15	676,35		190	640	64	89	12,5
		120 XH 300	TXH 3120	7A		4040	100	848.93	846,14		190	810	64	89	12,5

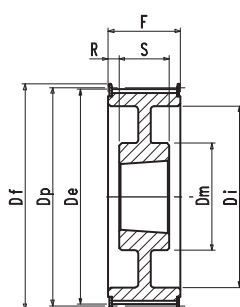
Pro řemeny

XH

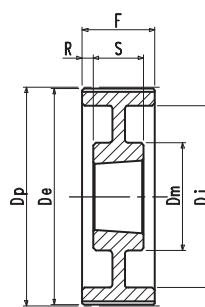
Řemenice pro upínací pouzdra TAPER-LOCK®



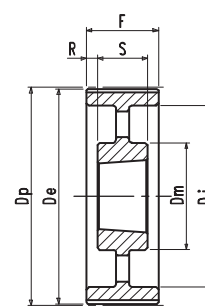
Typ 5F



Typ 4WF



Typ 9W



Typ 9A

XH 400 Rozteč 7/8" (22,225 mm) pro řemeny šířky 4" (101,60 mm)

Popis	Označení	Obj. č.	Typ	Typ příruby	Pouzdro	Max Ø hřídele	Dp [mm]	De [mm]	Df [mm]	Dm [mm]	Di [mm]	F [mm]	S [mm]	R [mm]	Hmot. [kg]
Ocel	S přírubami	18 XH 400	5F	F44	2517	60	127.34	124.55	140		95	64	45	19	
		20 XH 400	5F	F49	2517	60	141.49	138.69	154		110	64	45	19	
		22 XH 400	5F	F52	2517	60	155.64	152.84	168		120	64	45	19	
		24 XH 400	5F	F55	3020	75	169.79	166.99	184		135	64	45	19	
		26 XH 400	5F	F59	3020	75	183.94	181.14	200		150	64	45	19	
		28 XH 400	5F	F61	3020	75	198.08	195.29	212	120	165	64	45	9,5	
		30 XH 400	5F	F62	3020	75	212.23	209.44	226	120	180	64	45	9,5	
		32 XH 400	5F	F64	3020	75	226.38	223.59	240	120	195	64	45	9,5	
		40 XH 400	4WF	F70	3535	90	282.98	280.18	296	160	245	64	51	9,5	
Litina	Bez přírub	48 XH 400	9W		3535	90	339.57	336.78		160	300	64	51	6,5	
		60 XH 400	9A		4040	100	424.47	421.67		190	385	64	89	12,5	
		72 XH 400	9A		4040	100	509.4	506,56		190	470	64	89	12,5	
		84 XH 400	9A		4040	100	594.25	591,46		190	555	64	89	12,5	
		96 XH 400	9A		4040	100	679.15	676,35		190	640	64	89	12,5	
		120 XH 400	9A		4040	100	848.93	846,14		190	810	64	89	12,5	