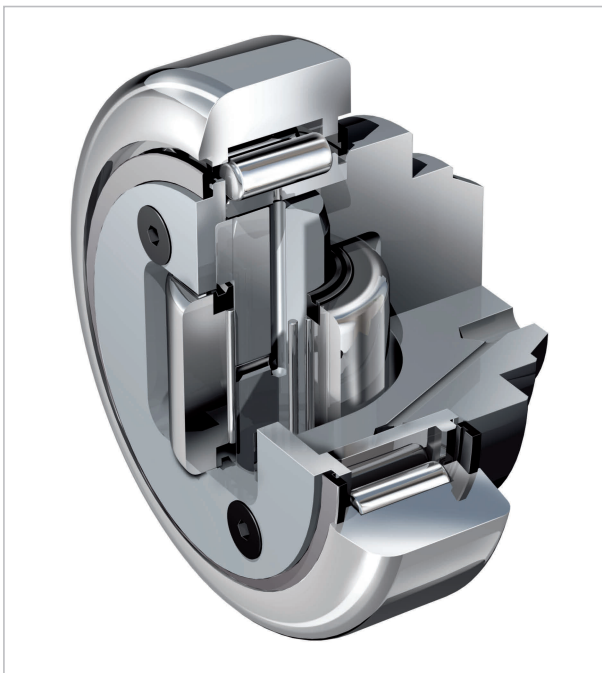


WINKEL-Rollen | WINKEL Bearings



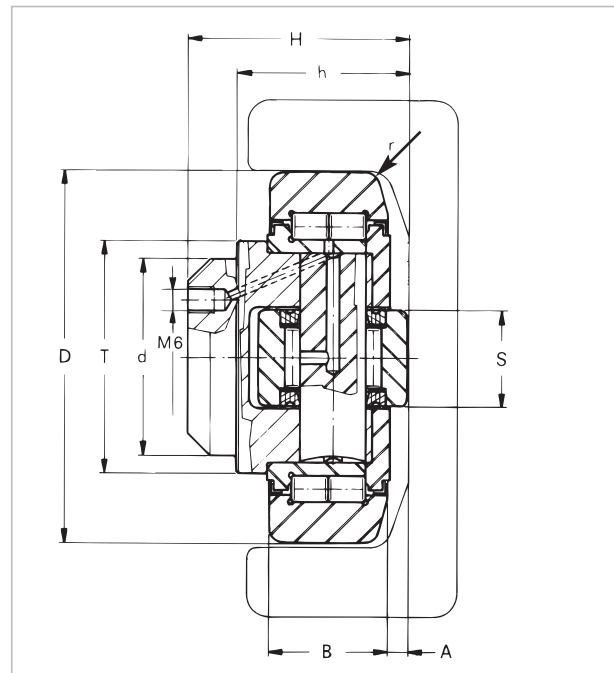
Hochtemperatur-WINKEL-Rolle Typ HT

- WINKEL-Rollen der Baureihe HT in Hochtemperaturausführung sind geeignet für Einsatztemperaturen bis 250°C
- Die WINKEL-Rollen verfügen über Lagerluft C3, Hochtemperaturfett sowie Viton-Dichtungen
- Nachschmierbarkeit nur für Rollen 4.054 HT - 4.063 HT



High temperature WINKEL Bearing Type HT

- WINKEL Bearings of range HT are made for high temperature applications up to 250°C
- The WINKEL Bearings are made with tolerance C3, high temperature grease and viton sealings
- Relubrication only for types 4.054 HT - 4.063 HT



Nachschmiersysteme für WINKEL-Rollen
Lubrication systems for WINKEL bearings
(Seite/page 144)

CAD Download in 2D/3D unter www.winkel.de

CAD download in 2D/3D at www.winkel.de

| Typ Type | Artikel-Nr. Article no. | D mm D mm | T mm T mm | d -0.05 mm d -0.05 mm | H mm H mm | h mm h mm | B mm B mm | A mm A mm | S mm S mm | r mm r mm |
|-------------|----------------------------|--------------|--------------|--------------------------|--------------|--------------|--------------|--------------|--------------|--------------|
| 4.053 HT | 200.024.011 | 52,5 | 40 | 30 | 33,0 | 27,0 | 17 | 5,0 | 15 | 2 |
| 4.054 HT | 200.001.019 | 62,5 | 42 | 30 | 37,5 | 30,5 | 20 | 2,5 | 20 | 3 |
| 4.055 HT | 200.002.020 | 70,1 | 48 | 35 | 44,0 | 36,0 | 23 | 2,5 | 22 | 4 |
| 4.056 HT | 200.003.018 | 77,7 | 54 | 40 | 48,0 | 36,5 | 23 | 3,0 | 26 | 4 |
| 4.058 HT | 200.005.014 | 88,4 | 59 | 45 | 57,0 | 44,0 | 30 | 3,5 | 26 | 3 |
| 4.061 HT | 200.008.007 | 107,7 | 71 | 60 | 69,0 | 55,0 | 31 | 4,0 | 34 | 5 |
| 4.062 HT | 200.009.021 | 123,0 | 80 | 60 | 72,3 | 56,0 | 37 | 5,0 | 40 | 5 |
| 4.063 HT | 200.010.031 | 149,0 | 103 | 60 | 77,5 | 58,5 | 45 | 5,5 | 50 | 3 |

C = Dyn. Tragzahl Radiallager (ISO 281/1), C₀ = Stat. Tragzahl Radiallager (ISO 76)

C_A = Dyn. Tragzahl Axiallager (ISO 281/1), C_{0A} = Stat. Tragzahl Axiallager (ISO 76)

F_R = Tragzahl Radiallager zulässige Belastung zwischen Rolle und Profil

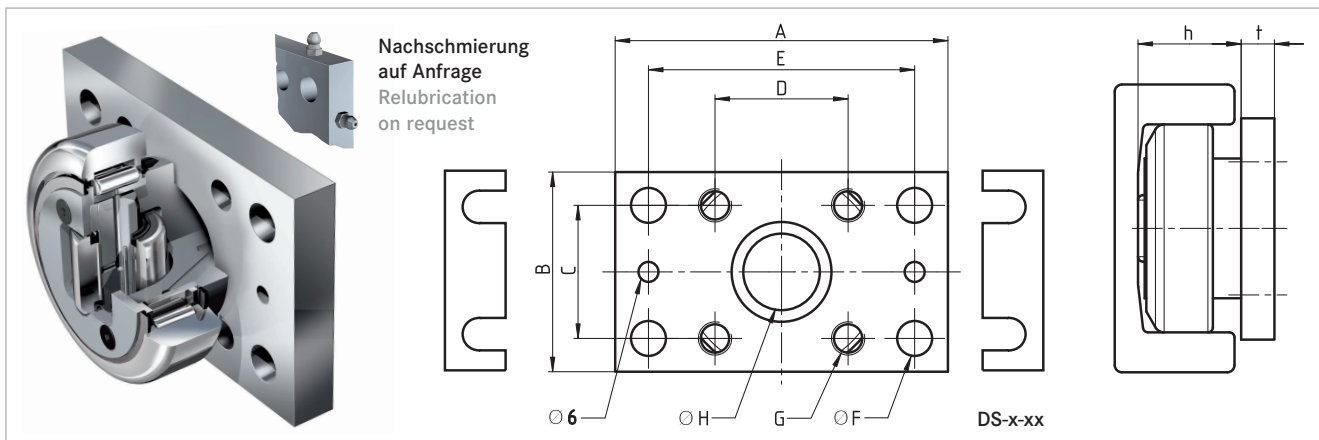
F_A = Tragzahl Axiallager zulässige Belastung zwischen Rolle und Profil

WINKEL-Rollen | WINKEL Bearings



Passende Anschraubplatten

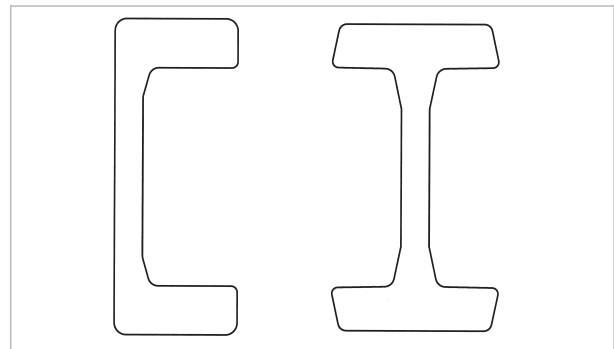
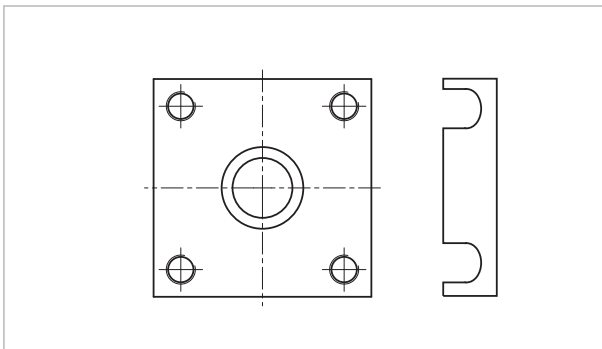
Suitable flange plates



| Typ Type | Artikel-Nr. Article no. | A | B | C | D | E | Ø F Ø F | G | Ø H Ø H | t | Distanzsteckblech 0,5mm Washer 0.5mm | Distanzsteckblech 1,0mm Washer 1.0mm | | |
|-------------|----------------------------|-----|-----|-----|-----|-----|------------|-----|------------|----|---|---|------------|-------------|
| AP S | 212.014.000 | 90 | 50 | 30 | 40 | 70 | 8,5 | M8 | 30 | 10 | DS-S-0,5 | 238.025.000 | DS-S-1,0 | 238.025.001 |
| AP 0 | 212.003.000 | 100 | 60 | 40 | 40 | 80 | 10,5 | M10 | 30 | 10 | DS-0-0,5 | 238.020.000 | DS-0-1,0 | 238.020.001 |
| AP 1 | 212.004.000 | 120 | 80 | 50 | 50 | 90 | 12,5 | M12 | 35 | 15 | DS-1-0,5 | 238.021.000 | DS-1-1,0 | 238.021.001 |
| AP 2 | 212.005.000 | 120 | 80 | 50 | 50 | 90 | 12,5 | M12 | 40 | 15 | DS-2-0,5 | 238.021.000 | DS-2-1,0 | 238.021.001 |
| AP 3.1 | 212.006.001 | 160 | 100 | 60 | 60 | 120 | 17,0 | M16 | 45 | 20 | DS-3.1-0,5 | 238.105.000 | DS-3.1-1,0 | 238.105.001 |
| AP 4 | 212.007.001 | 180 | 120 | 80 | 80 | 140 | 17,0 | M16 | 60 | 20 | DS-4-0,5 | 238.023.000 | DS-4-1,0 | 238.023.001 |
| AP 6 | 212.008.000 | 200 | 150 | 100 | 100 | 160 | 17,0 | M16 | 60 | 20 | DS-6-0,5 | 238.024.000 | DS-6-1,0 | 238.024.001 |

Anschraubplatten quadratisch Reihe AP-Q S. 96
Flange plates square series AP-Q page 96

Profile Seite 68 / 76
Profiles page 68 / 76



| Typ Type | F _R kN F _R kN | F _A kN F _A kN | C kN C kN | C ₀ kN C ₀ kN | C _A kN C _A kN | C _{0A} kN C _{0A} kN | u/min max. r/µm max. | Gewicht kg Weight kg | Anschraubplatten Flange plates | Profile Profiles |
|-------------|--|--|--------------|--|--|--|-------------------------|-------------------------|-----------------------------------|---------------------|
| 4.053 HT | 5,23 | 1,68 | 24,0 | 32,0 | 7 | 7 | 800 | 0,46 | APS APS-Q | S |
| 4.054 HT | 10,30 | 3,20 | 31,0 | 35,5 | 11 | 11 | 900 | 0,55 | AP0 AP0-Q | 0 NbV |
| 4.055 HT | 12,40 | 3,87 | 45,5 | 51,0 | 13 | 14 | 900 | 0,85 | AP1 AP1-Q | 1 NbV 3018 NbV |
| 4.056 HT | 12,90 | 4,00 | 48,0 | 56,8 | 18 | 18 | 800 | 1,10 | AP2 AP2-Q | 2 NbV |
| 4.058 HT | 22,40 | 7,00 | 68,0 | 72,0 | 23 | 23 | 750 | 1,70 | AP3.1 AP3-Q | 3 NbV 3020 NbV |
| 4.061 HT | 23,80 | 7,44 | 81,0 | 95,0 | 31 | 36 | 650 | 2,95 | AP4 AP4-Q | 4 NbV |
| 4.062 HT | 33,90 (26,00) | 10,60 | 110,0 | 132,0 | 43 | 50 | 550 | 4,10 | AP4 AP4-Q | 5 NbV (3353 NbV) |
| 4.063 HT | 59,20 | 18,50 | 151,0 | 192,0 | 68 | 71 | 450 | 6,85 | AP6 AP6-Q | 6 NbV |

C = Dynamic load capacity radial bearing (ISO 281/1), C₀ = Static load capacity radial bearing (ISO 76)

C_A = Dynamic load capacity axial bearing (ISO 281/1), C_{0A} = Static load capacity axial bearing (ISO 76)

F_R = Load capacity radial bearing max. allowable force between bearing and profile

F_A = Load capacity axial bearing max. allowable force between bearing and profile